



BIMEX
 5 Am Duerf
 L - 9637 Bockholtz
 Grand Duchy of Luxemburg

Tel.: +352 899 477
 Fax.: +352 899 478
 email : bimexlux@pt.lu



03.100

HANDWHEEL FOR SOFT SEALING GATE VALVE
VOLANT POUR ROBINET-VANNE A OPERCULE ELASTOMERE

| DESCRIPTION | MATERIAL |
|-------------|--|
| HANDWHEEL | PRINTED STEEL ST W24 |
| COATING | POLYESTER OF COLOUR BLACK APPLIED ELECTROSTATICALLY |

| DESCRIPTION | MATERIAU |
|-------------|---|
| VOLANT | ACIER IMPRIME ST W24 |
| REVETEMENT | POLYESTERE DE COULEUR NOIRE APPLIQUE ELECTROSTATIQUEMENT |

| NORMS / NORMES |
|----------------|
| DIN 10305-3 |



03.200

SQUARE CAP FOR SOFT SEALING GATE VALVE
CARRE DE MANOEUVRE POUR ROBINET-VANNE A OPERCULE ELASTOMERE

| DESCRIPTION | MATERIAL |
|-------------|--|
| SQUARE CAP | DUCTILE CAST IRON GGG 50 (EN-GJS-500-7) |
| COATING | EPOXY PAINT POTABLE RESICOAT 9000 R4 |

| DESCRIPTION | MATERIAU |
|-------------|--|
| VOLANT | FONTTE DUCTILE GS 500 (EN-GJS-500-7) |
| REVETEMENT | PEINTURE EPOXY POTABLE RESICOAT 9000 R4 |

| NORMS / NORMES |
|----------------|
| EN 1563 |
| DIN 30677 |

HOMOLOGATIONS

- Painting :
- INETI, Portugal
 - KIWA, Netherlands
 - WRAS, UK
 - CARSO, France
 - HYGIENE, Institut Ruhrgebiets

HOMOLOGATIONS

- Peinture :
- INETI, Portugal
 - KIWA, Netherlands
 - WRAS, UK
 - CARSO, France
 - HYGIENE, Institut Ruhrgebiets



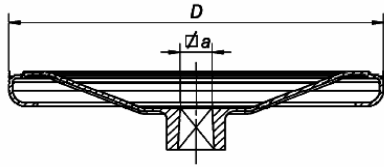
03.300

EXTENSION SPINDLE FOR SOFT SEALING GATE VALVE
TIGE ALLONGE POUR ROBINET-VANNE A OPERCULE ELASTOMERE

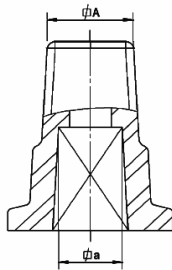
| DESCRIPTION | MATERIAL |
|------------------------------|--|
| SQUARE BAR | ZINC COATED STEEL ST37 |
| SPINDLE CAP | DUCTILE CAST IRON GGG 50 (EN-GJS-500-7) |
| BOTTOM ADAPTOR | DUCTILE CAST IRON GGG 50 (EN-GJS-500-7) |
| PROTECTION TUBE TOP COVER | PP |
| PROTECTION TUBE BOTTOM COVER | PP |
| BOTTOM CONNECTOR | PP |
| BOLT | STEEL ZINC PLATED cl. 8.8 YELLOW PASSIVATED |
| SPLIT | STAINLESS STEEL A2 (X5 CrNi 18-10) |

| DESCRIPTION | MATERIAU |
|--|---|
| BARRE | ACIER ZINGUE ST37 |
| CARRE | FONTTE DUCTILE GS 500 (EN-GJS-500-7) |
| ADAPTATEUR INFERIEUR | FONTTE DUCTILE GS 500 (EN-GJS-500-7) |
| TUBE DE PROTECTION COUVERCLE SUPERIEUR | PP |
| TUBE DE PROTECTION COUVERCLE INFERIEUR | PP |
| CONNECTEUR INFERIEUR | PP |
| BOULON | ACIER ZINGUE cl. 8.8 + PASSIVATION |
| SPLIT | ACIER INOX A2 (X5 CrNi 18-10) |

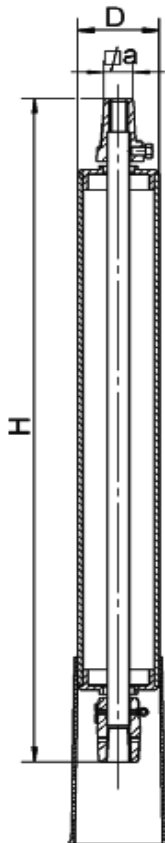
| NORMS / NORMES |
|----------------|
| EN 10025 |
| EN 1563 |
| EN 1563 |
| EN 10088-1 |



| $\frac{ND}{DN}$ | D | a | Weight Poids |
|--|------|------|-----------------|
| mm | mm | mm | kg |
| 20-3/4" - 25-1" - 32-1"1/4 40-1"1/2 - 50-2" | 150 | 13 | 0,8 |
| 40 - 50 - 63 | 200 | 14 | 0,7 |
| 60 - 65 - 75 - 80 - 90 | 200 | 17 | 0,8 |
| 100 - 110 - 125 - 140- 150 - 160 | 315 | 19 | 1,9 |
| 200 | 400 | 24 | 3,7 |
| 250 - 300 - 315 | 500 | 27 | 4,7 |
| 350 - 400 - 450 - 500 | 640 | 32 | 15,0 |



| $\frac{ND}{DN}$ | A | a | Weight Poids |
|--|------|------|-----------------|
| mm | mm | mm | kg |
| 20-3/4" - 25-1" - 32-1"1/4 40-1"1/2 - 50-2" | 27 | 13 | 0,2 |
| 40 - 50 - 63 | 27 | 14 | 0,2 |
| 60 - 65 - 75 - 80 - 90 | 27 | 17 | 0,2 |
| 100 - 110 - 125 - 140- 150 - 160 | 27 | 19 | 0,2 |
| 200 | 27 | 24 | 0,6 |
| 250 - 300 - 315 | 27 | 27 | 0,6 |
| 350 - 400 - 450 - 500 | 27 | 32 | 1,0 |



| $\frac{ND}{DN}$ | a | D | Weight Poids | |
|--|------|------|-----------------|---------------|
| | | | $H = 650 mm$ | $H = 1000 mm$ |
| mm | mm | mm | kg | |
| 20-3/4" - 25-1" - 32-1"1/4 40-1"1/2 - 50-2" | 27 | 63 | 2,4 | 3,3 |
| 40 - 50 - 63 | 27 | 63 | 2,4 | 3,3 |
| 60 - 65 - 75 - 80 - 90 | 27 | 63 | 2,4 | 3,3 |
| 100 - 110 | 27 | 63 | 3 | 4,4 |
| 125 - 140- 150 - 160 | 27 | 63 | 3,2 | 4,7 |
| 200 | 27 | 63 | 4,8 | 6,8 |
| 250 - 300 - 315 | 27 | 63 | 4,8 | 6,8 |
| 350 - 400 - 450 - 500 | 27 | 63 | 6,4 | 9,9 |